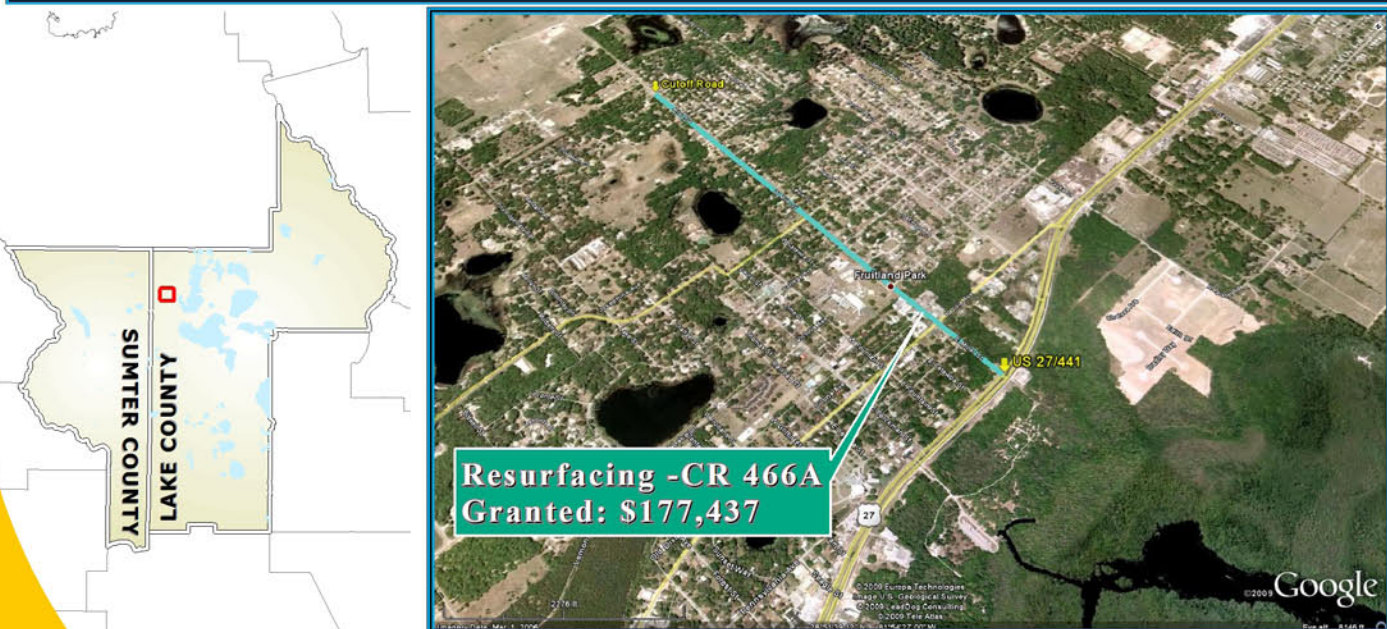
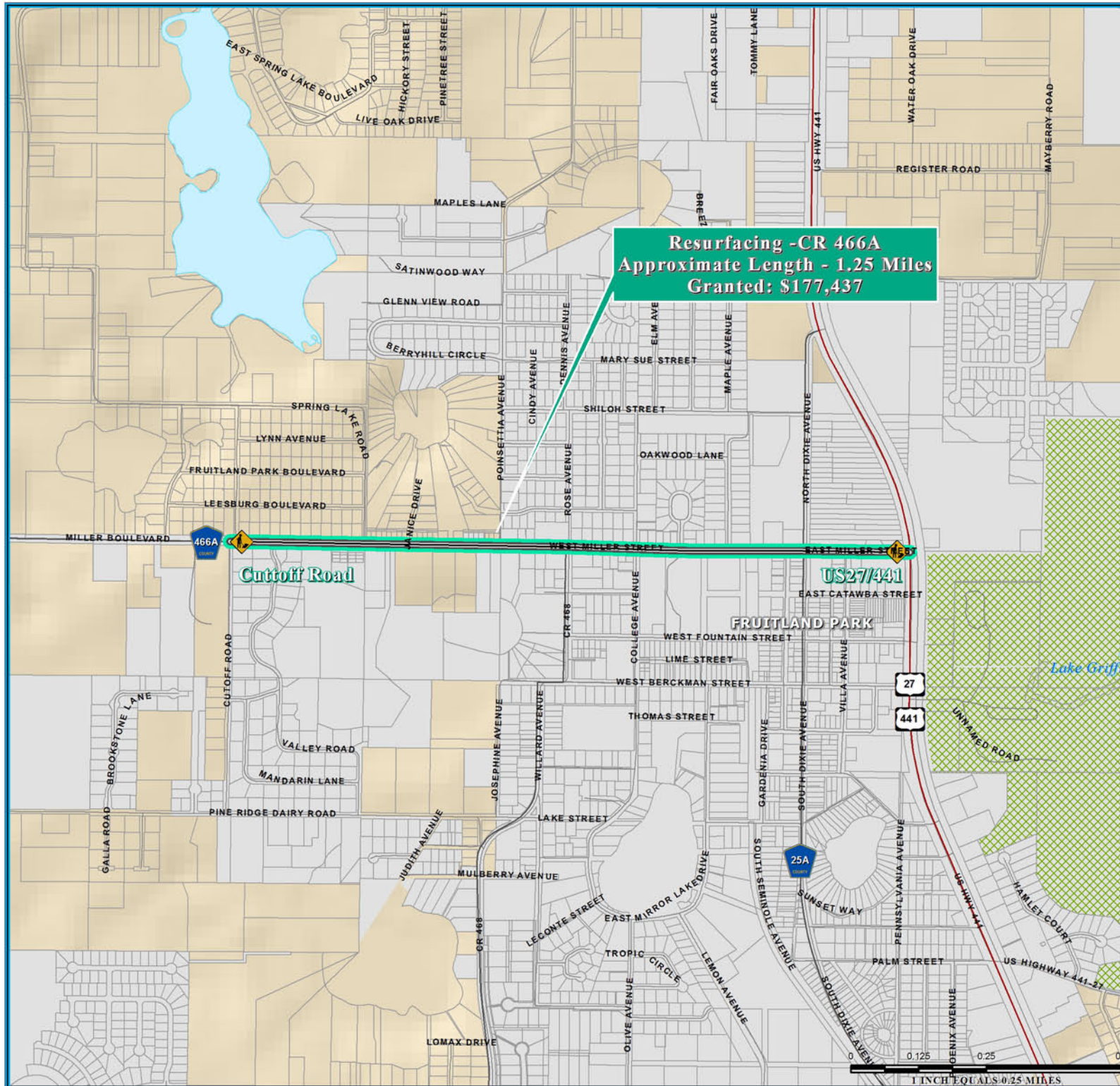


# RESURFACING - CR466A ECONOMIC STIMULUS PROJECT



**NOTE:**  
 Florida Department of Transportation (FDOT), recommended Economic Stimulus Project for Lake County and Sumter County as announced by Florida Governor May 4, 2009. Additional information about Florida's implementation of the transportation provisions of the American Recovery and Reinvestment Act of 2009 (ARRA) please visit; <http://www.dot.state.fl.us/planning/economicstimulus/>



## TRANSPORTATION PLANNING AREA SUMTER AND LAKE COUNTY, FLORIDA



- County Road
- State Road
- US Highway
- Interstate
- Turnpike
- Active Railroad
- Water Body
- Public Lands Managed by Federal Agency
- Public Lands Managed by State Agency
- Public Lands Managed by Local Agency

**DATA SOURCES:**  
 Lake and Sumter County GIS Department, Planning Area Data Compilation and Map production copyright of the Lake-Sumter Metropolitan Planning Organization.  
 This map product was prepared from a GIS database. The system was developed by the Lake-Sumter Metropolitan Planning Organization and Lake County Board of County Commissioners. The accuracy and reliability of the information is not guaranteed. The user assumes all responsibility for any use of this information. The Lake-Sumter Metropolitan Planning Organization and Lake County Board of County Commissioners, its employees, agents and personnel, shall not be liable for any use of this information. Independent verification of all data is recommended. This map product is provided for informational purposes only.

**MAP COMPOSITION:**  
 MAY, 2009

\\Lakesumter\mopo\gis\ARRA - CR466A - Resurfacing - StimulusFundedSegment\_11x17.mxd - 9/17/2009 @ 11:16:46 AM