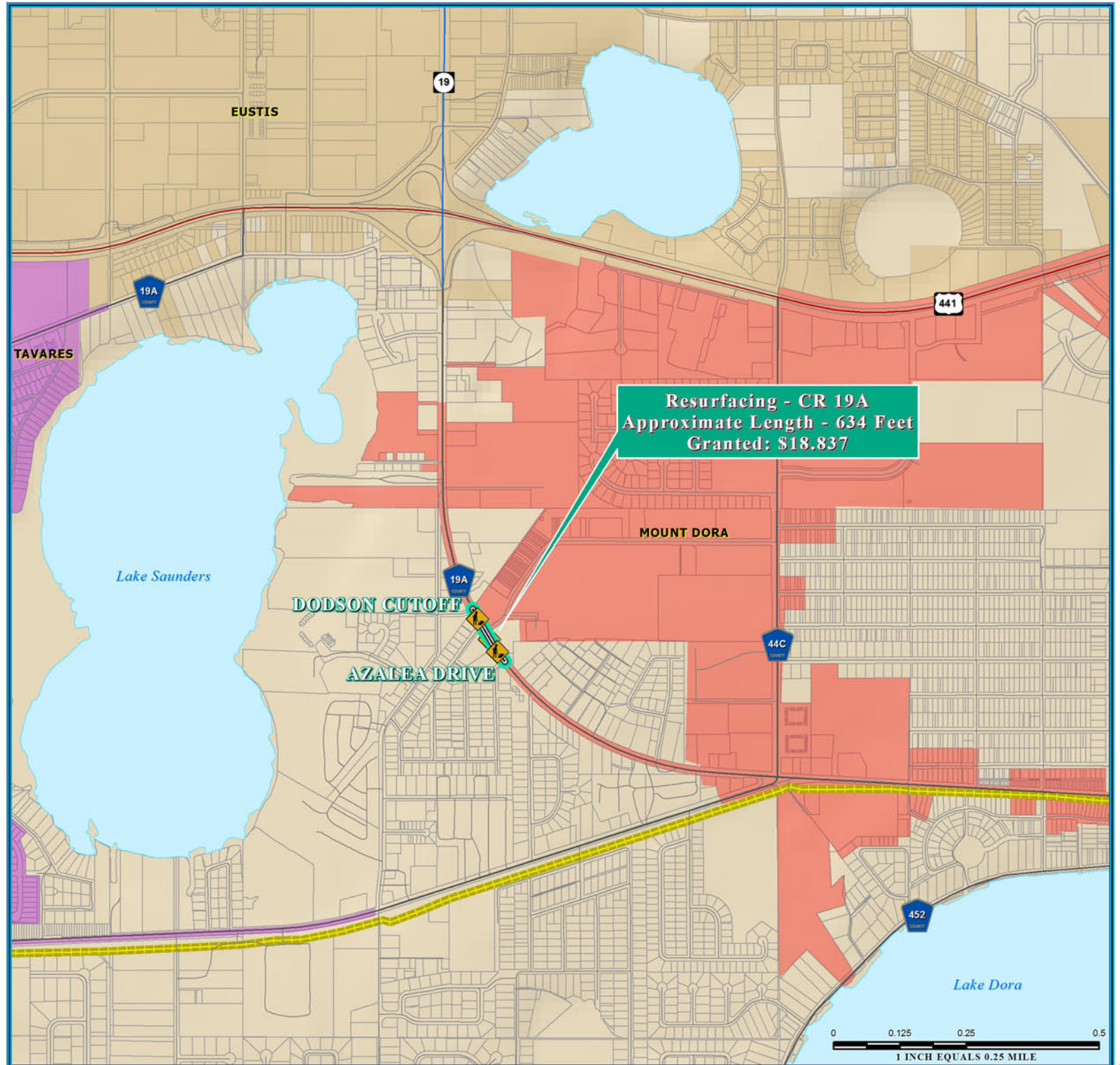
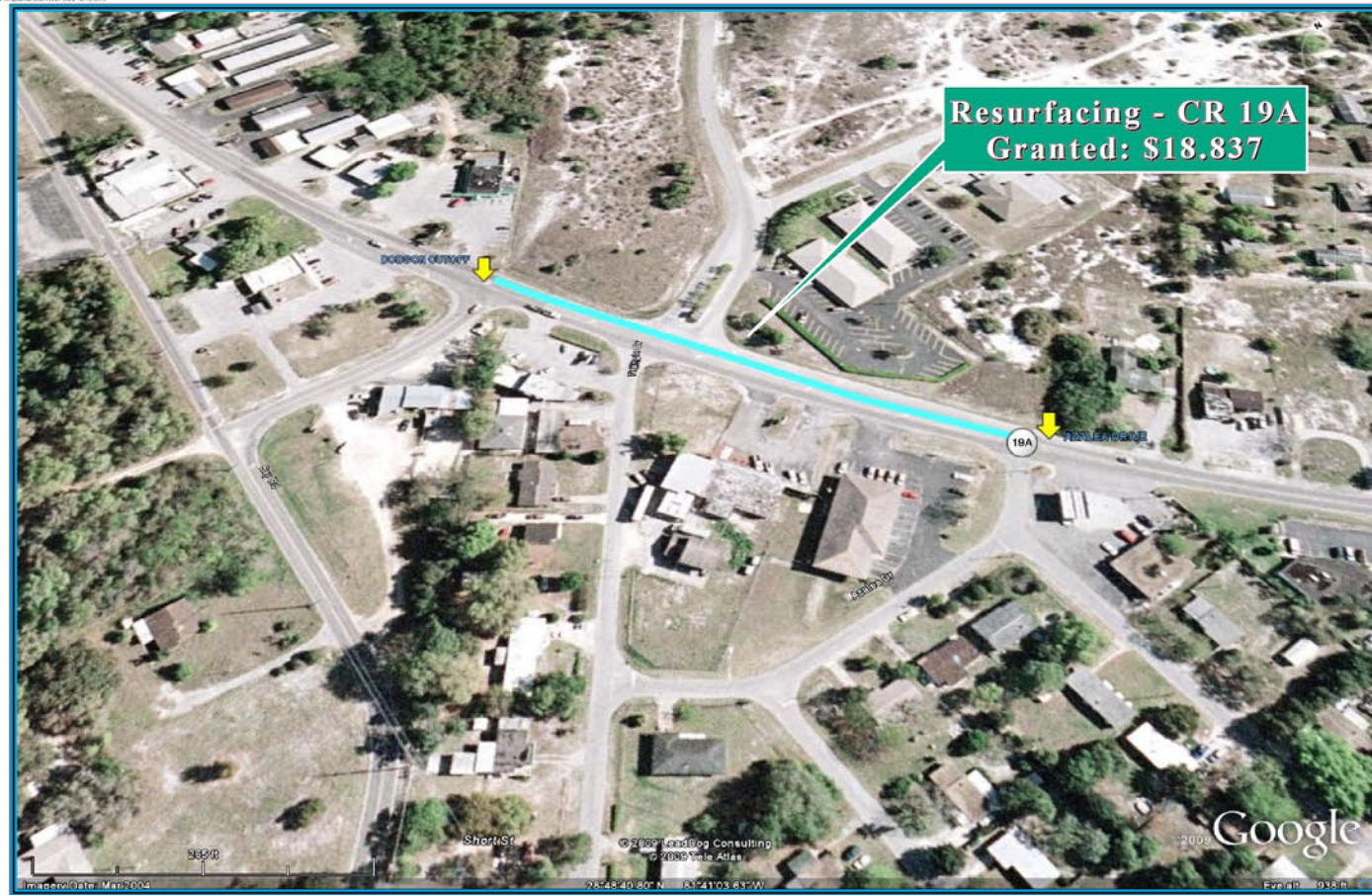


RESURFACING - CR19A ECONOMIC STIMULUS PROJECT



NOTE:

Florida Department of Transportation (FDOT), recommended Economic Stimulus Project for Lake County and Sumter County as announced by Florida Governor May 4, 2009. Additional information about Florida's implementation of the transportation provisions of the American Recovery and Reinvestment Act of 2009 (ARRA) please visit; <http://www.dot.state.fl.us/planning/economicstimulus/>



TRANSPORTATION PLANNING AREA SUMTER AND LAKE COUNTY, FLORIDA



- County Road
- State Road
- US Highway
- Interstate
- Turnpike
- Active Railroad
- Water Body
- Public Lands Managed by Federal Agency
- Public Lands Managed by State Agency
- Public Lands Managed by Local Agency

DATA SOURCES:
Lake and Sumter County GIS Department, Planning
Data Compilation and Map production copyright of the
Lake-Sumter Metropolitan Planning Organization.
This map product was prepared from a geographic information system
enabled by the Lake-Sumter Metropolitan Planning Organization and
Lake County Board of County Commissioners.
Its employees, agents and personnel, make no warranty as to its accuracy
and its use is at the user's sole risk. The user assumes all liability for
property boundaries, or its use in connection with any other public or private
entity. The Lake-Sumter Metropolitan Planning Organization and
Lake County Board of County Commissioners, its employees, agents and
personnel make no warranty as to the accuracy of the data shown on this
map. THIS IS NOT A CONTRACT. THE INFORMATION IS FOR INFORMATIONAL
PURPOSES ONLY. NO OTHER MAP PRODUCTS. Independent verification of all data
is required for the map product. All other data obtained by the user of this map.

MAP COMPOSITION:
MAY, 2009

