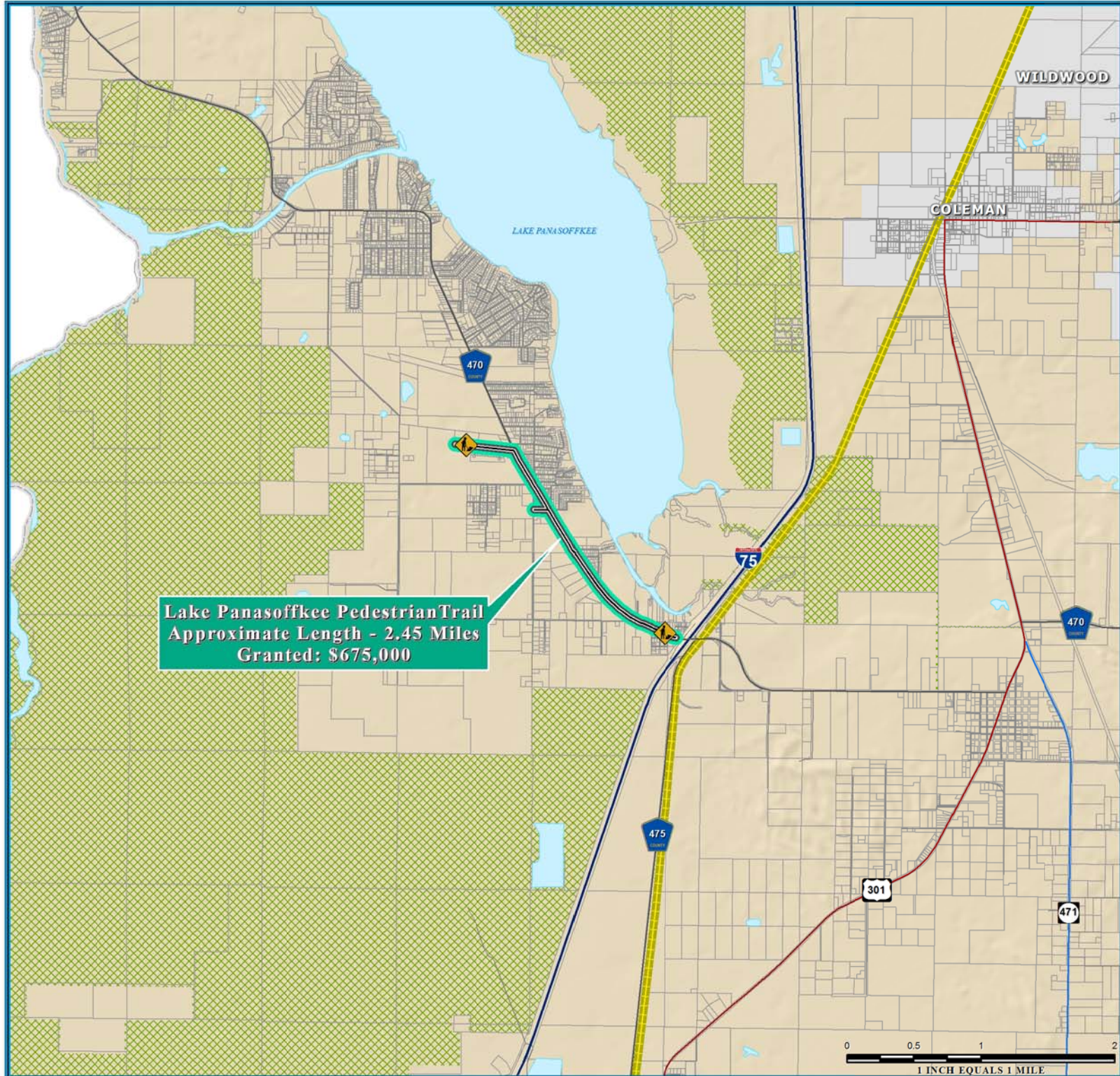
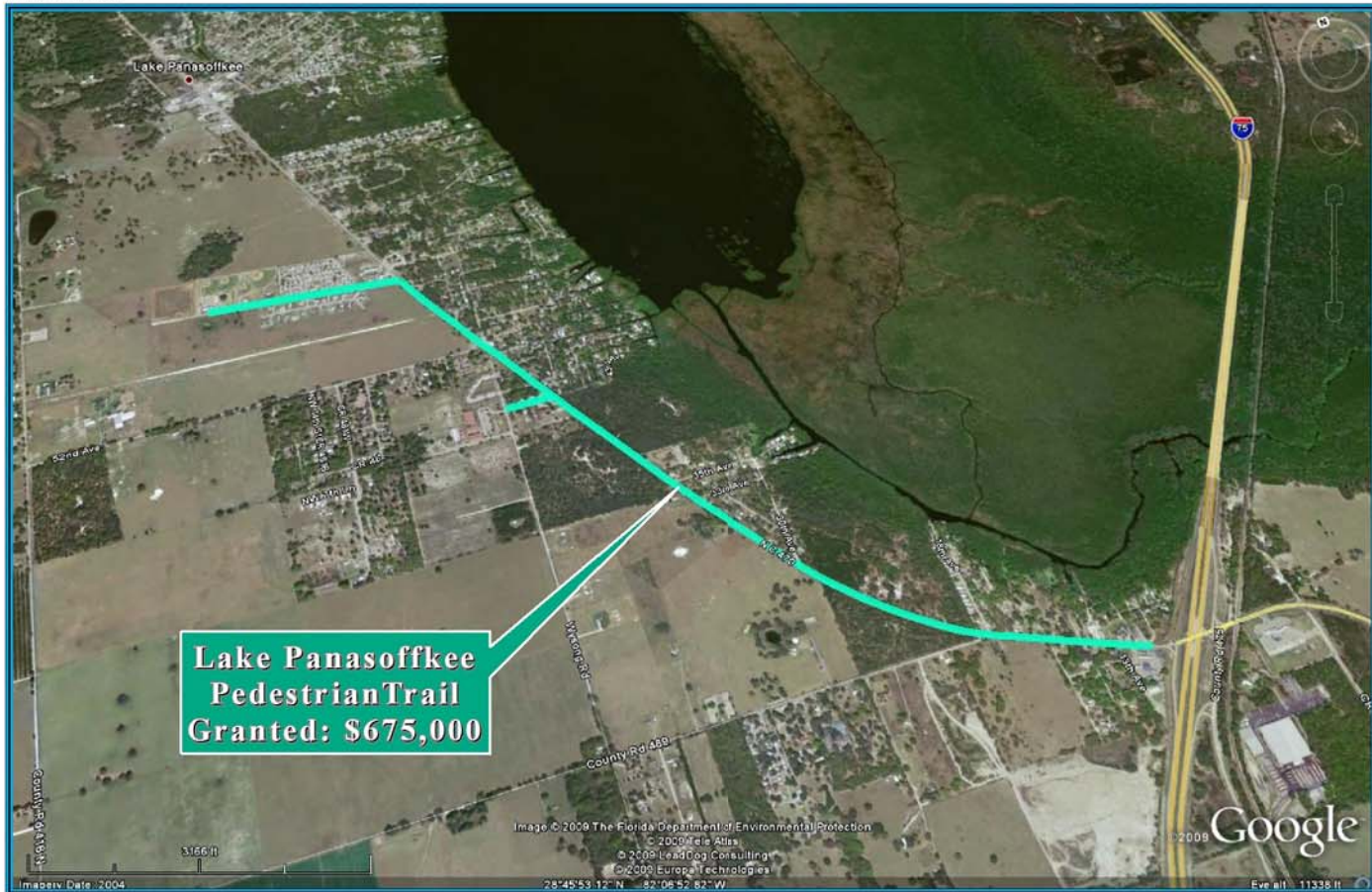


LAKE PANASOFFKEE TRAIL, CR470 ECONOMIC STIMULUS PROJECT



NOTE:
 Florida Department of Transportation (FDOT), recommended Economic Stimulus Project for Lake County and Sumter County as announced by Florida Governor May 4, 2009. Additional information about Florida's implementation of the transportation provisions of the American Recovery and Reinvestment Act of 2009 (ARRA) please visit; <http://www.dot.state.fl.us/planning/economicstimulus/>



TRANSPORTATION PLANNING AREA SUMTER AND LAKE COUNTY, FLORIDA



- County Road
- State Road
- US Highway
- Interstate
- Turnpike
- Active Railroad
- Water Body
- Public Lands Managed by Federal Agency
- Public Lands Managed by State Agency
- Public Lands Managed by Local Agency

DATA SOURCES:
 Lake and Sumter County GIS Department, Planning
 Data Corporation and Map production capabilities of the
 Lake-Sumter Metropolitan Planning Organization
 This map product was prepared from all available information
 System available to the Lake-Sumter Metropolitan Planning Organization
 and its public lands management agencies. The accuracy, reliability,
 and its use for purposes not intended by the data providers, is the
 responsibility of the user. The Lake-Sumter Metropolitan Planning Organization
 and its public lands management agencies do not warrant, agree and
 assume no liability for any errors or omissions in this map product.
 THE USER SHALL BE RESPONSIBLE FOR VERIFYING THE ACCURACY OF THE DATA
 FOR ANY PURPOSES NOT INTENDED BY THE DATA PROVIDERS. THE USER
 SHALL BE RESPONSIBLE FOR VERIFYING THE ACCURACY OF THE DATA FOR ANY
 PURPOSES NOT INTENDED BY THE DATA PROVIDERS. THE USER SHALL BE
 RESPONSIBLE FOR VERIFYING THE ACCURACY OF THE DATA FOR ANY PURPOSES
 NOT INTENDED BY THE DATA PROVIDERS.

MAP COMPOSITION:
 MAY, 2009

\\Lakesumter\mop\GIS\ARRA_LakePanasoffkeeTrail_Resurfacing_StimulusFundedSegment_11x17.mxd - 7/15/2009 @ 9:22:09 AM