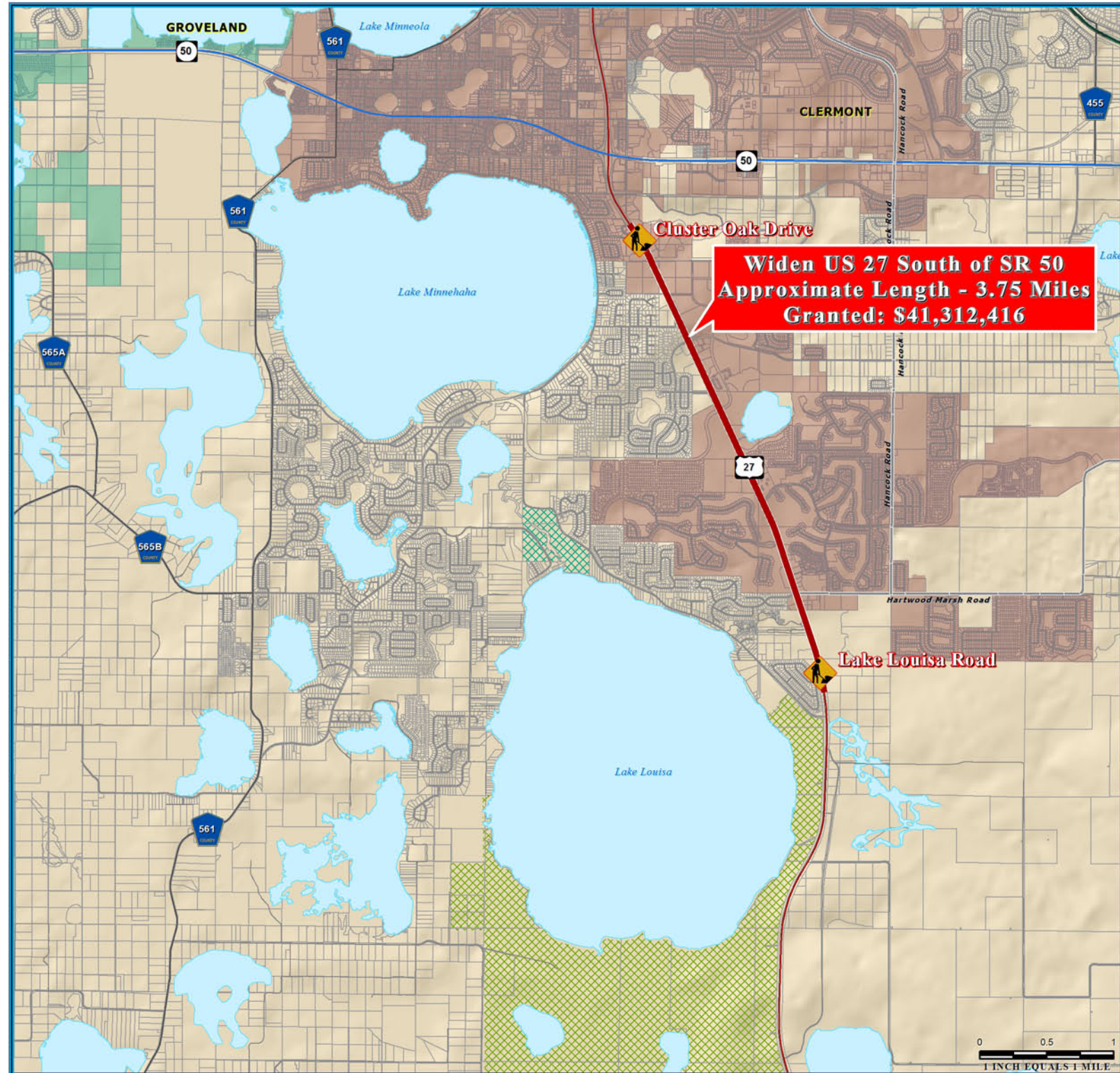
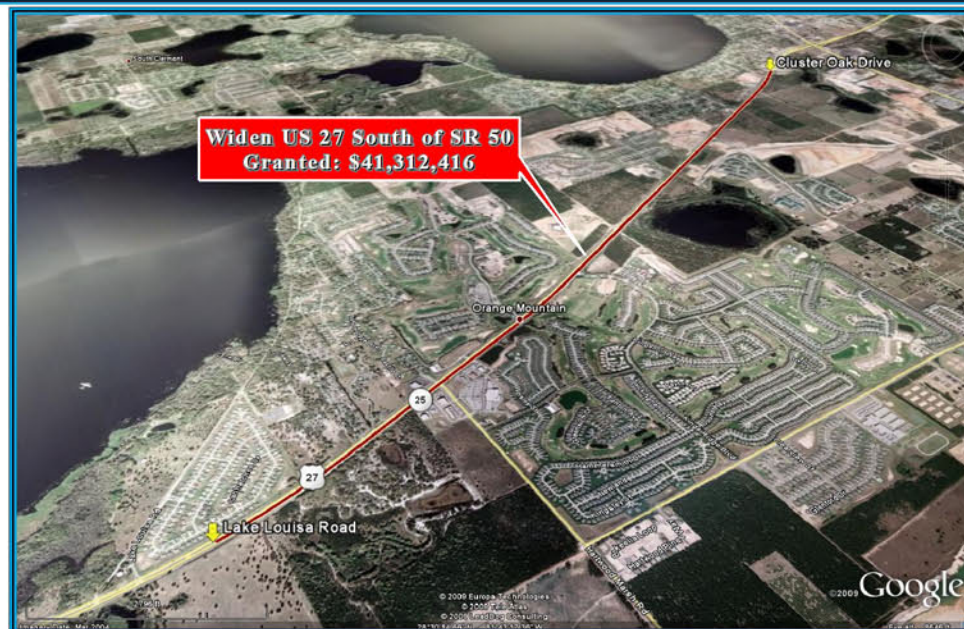


WIDENING OF US 27 ECONOMIC STIMULUS PROJECT



NOTE:

Florida Department of Transportation (FDOT), recommended Economic Stimulus Project for Lake County and Sumter County as announced by Florida Governor May 4, 2009. Additional information about Florida's implementation of the transportation provisions of the American Recovery and Reinvestment Act of 2009 (ARRA) please visit; <http://www.dot.state.fl.us/planning/economicstimulus/>



TRANSPORTATION PLANNING AREA SUMTER AND LAKE COUNTY, FLORIDA



- County Road
- State Road
- US Highway
- Interstate
- Turnpike
- Active Railroad
- Water Body
- Public Lands Managed by Federal Agency
- Public Lands Managed by State Agency
- Public Lands Managed by Local Agency

DATA SOURCES:
Lake and Sumter County GIS Department, Planning
Data Compilation and Map production copyright of the
Lake-Sumter Metropolitan Planning Organization.
This map product was prepared from a geographic information system
enabled by the Lake-Sumter Metropolitan Planning Organization and
Lake County Board of County Commissioners.
Its employees, agents and providers make no warranty as to the accuracy
and/or precision of any information, data, or other content, or the
proprietary interests, or it is provided as is without any liability in
Lake-Sumter Metropolitan Planning Organization and
Lake County Board of County Commissioners, its employees, agents and
providers. THE USER ASSUMES ALL RESPONSIBILITY FOR THE USE OF THIS
PRODUCT AND FOR ANY DAMAGE TO PERSONS OR PROPERTY.
© 2009 MPO. ALL RIGHTS RESERVED. No part of this map product may be
reproduced or transmitted in any form or by any means without the
written permission of the Lake-Sumter Metropolitan Planning Organization.

MAP COMPOSITION:
MAY, 2009

\\Lakesumter\mopo\gis\ARRA_US27_ShrSR50_StimulusFundedSegment_11x17.mxd - 9/17/2009 @ 12:26:45 PM