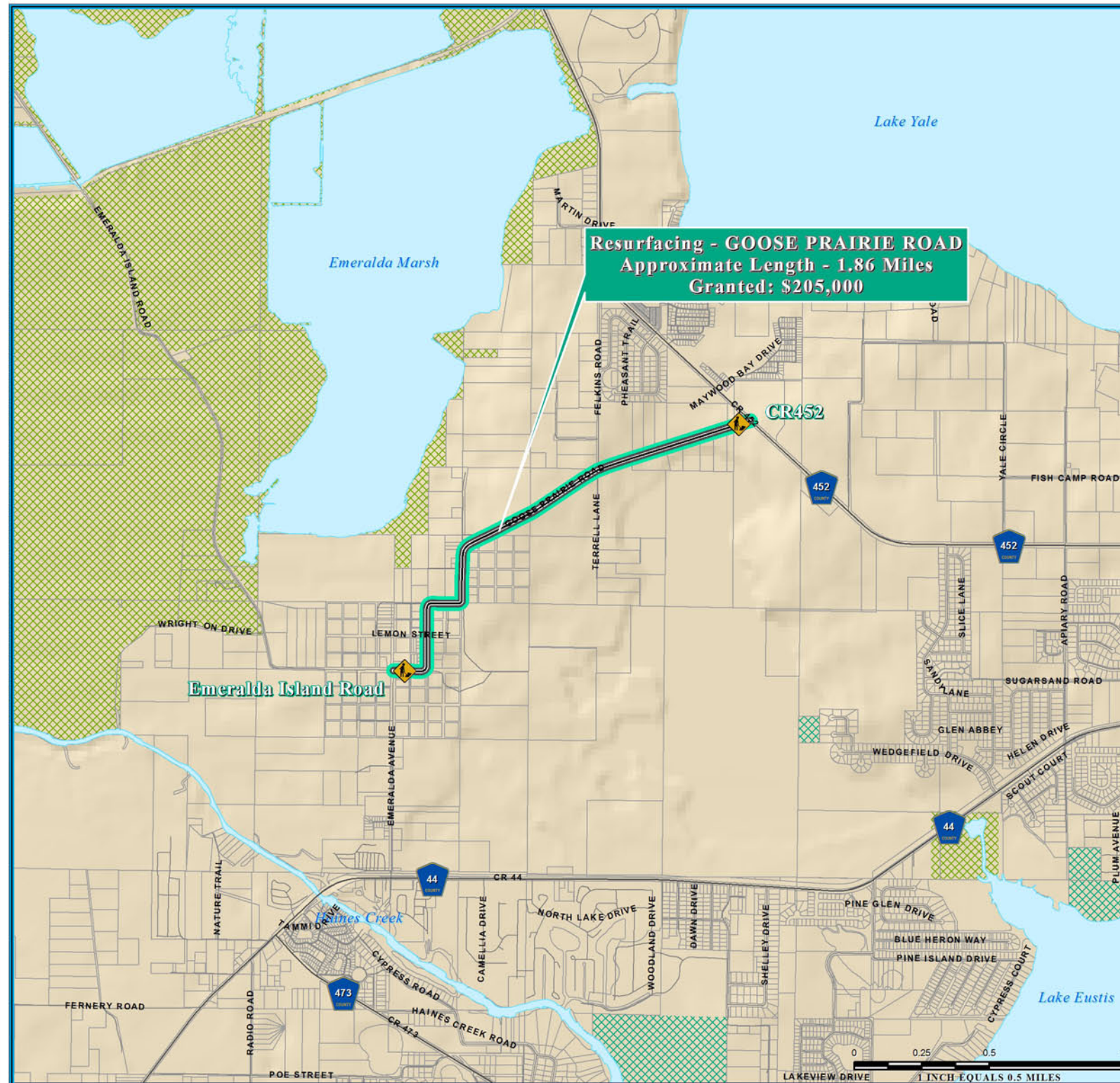
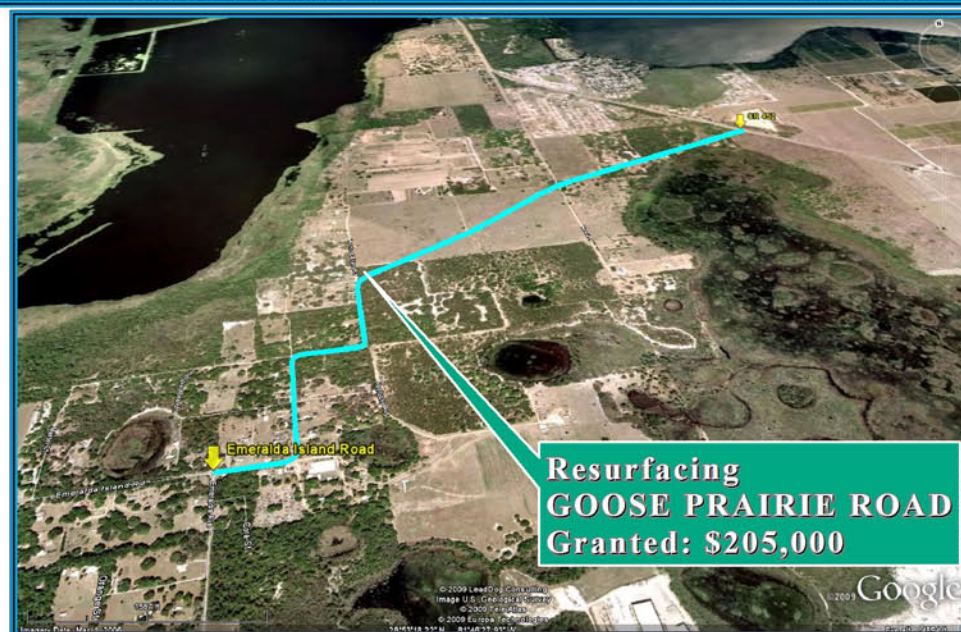


RESURFACING-GOOSE PRAIRIE ROAD ECONOMIC STIMULUS PROJECT



NOTE:
Florida Department of Transportation (FDOT), recommended Economic Stimulus Project for Lake County and Sumter County as announced by Florida Governor May 4, 2009. Additional information about Florida's implementation of the transportation provisions of the American Recovery and Reinvestment Act of 2009 (ARRA) please visit; <http://www.dot.state.fl.us/planning/economicstimulus/>



TRANSPORTATION PLANNING AREA SUMTER AND LAKE COUNTY, FLORIDA



- County Road
- State Road
- US Highway
- Interstate
- Turnpike
- Active Railroad

- Water Body
- Public Lands Managed by Federal Agency
- Public Lands Managed by State Agency
- Public Lands Managed by Local Agency

DATA SOURCES:
Lake and Sumter County GIS Department, Planning Department, and Florida Department of Transportation (FDOT) provided the data for this map. The Lake-Sumter Metropolitan Planning Organization and Lake County Board of County Commissioners provided the data for this map. The Lake-Sumter Metropolitan Planning Organization and Lake County Board of County Commissioners provided the data for this map. The Lake-Sumter Metropolitan Planning Organization and Lake County Board of County Commissioners provided the data for this map.

MAP COMPOSITION:
MAY, 2009

\\Lakesumter\mopo\gis\ARRA_GoosePrairieRoad_Resurfacing_StimulusFundedSegment_11x17.mxd - 7/14/2009 @ 5:22:02 PM