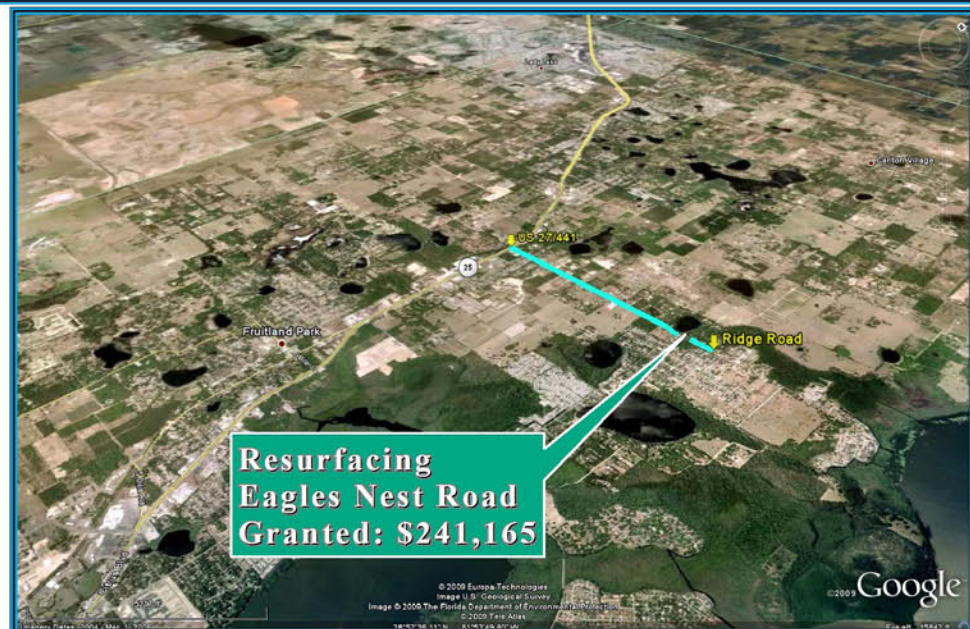
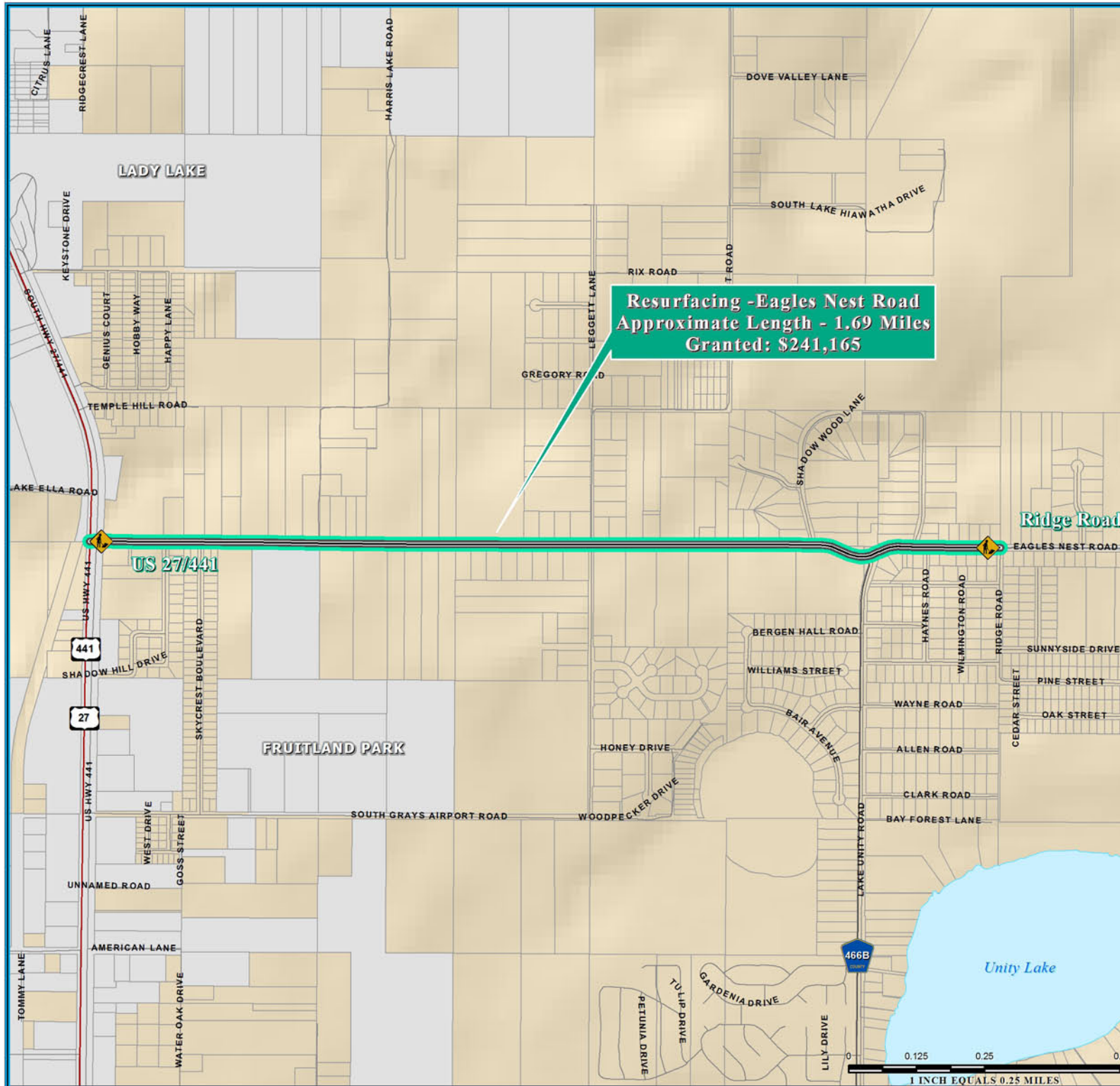
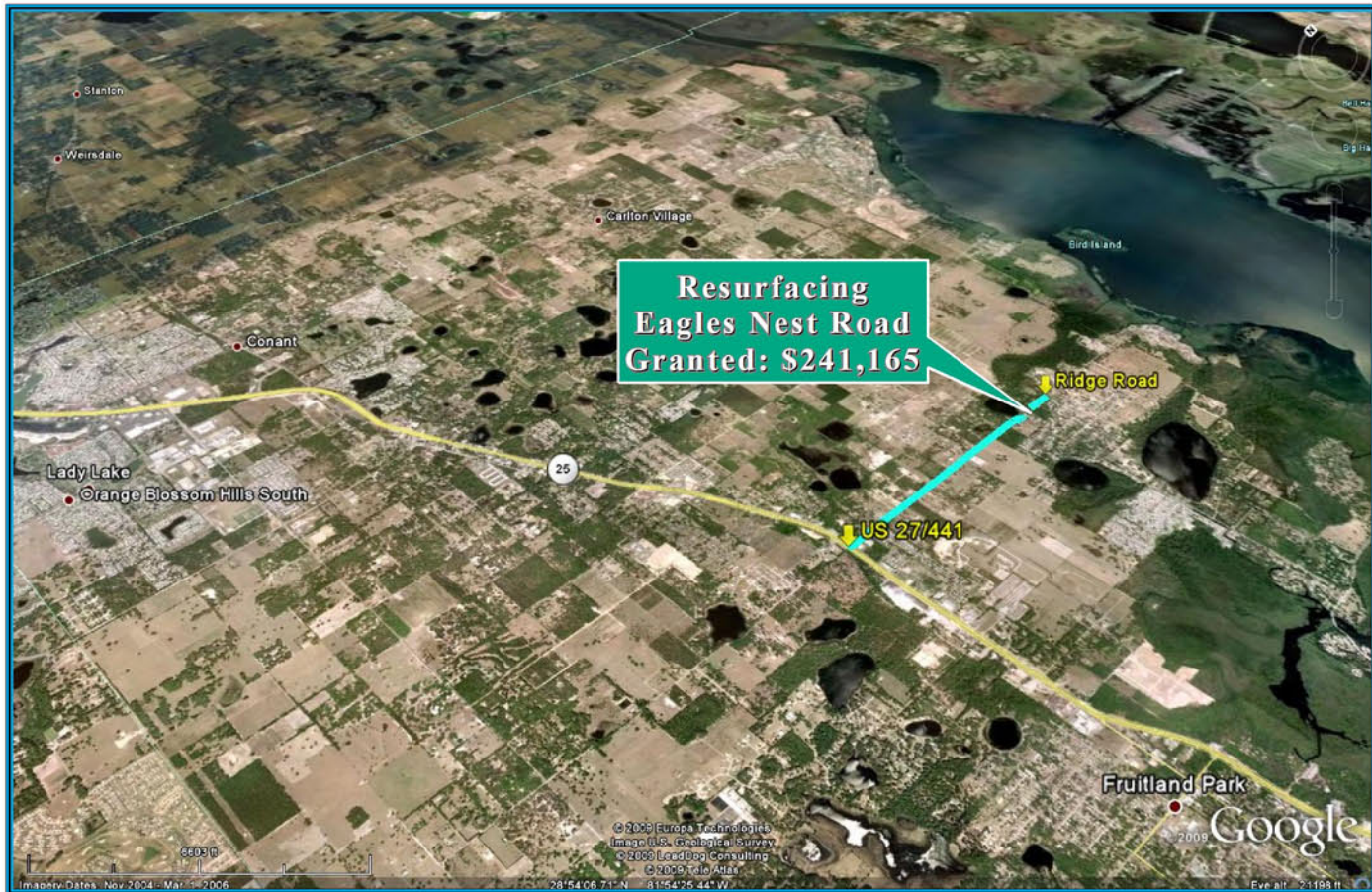


RESURFACING-EAGLES NEST ROAD ECONOMIC STIMULUS PROJECT



NOTE:
Florida Department of Transportation (FDOT), recommended Economic Stimulus Project for Lake County and Sumter County as announced by Florida Governor May 4, 2009. Additional information about Florida's implementation of the transportation provisions of the American Recovery and Reinvestment Act of 2009 (ARRA) please visit; <http://www.dot.state.fl.us/planning/economicstimulus/>



TRANSPORTATION PLANNING AREA SUMTER AND LAKE COUNTY, FLORIDA



- County Road
- State Road
- US Highway
- Interstate
- Turnpike
- Active Railroad
- Water Body
- Public Lands Managed by Federal Agency
- Public Lands Managed by State Agency
- Public Lands Managed by Local Agency

DATA SOURCES:
Lake and Sumter County GIS Department, Planning
Data Compilation and Map production copyright of the
Lake-Sumter Metropolitan Planning Organization
This project was prepared from a digital data set
System created by the Lake-Sumter Metropolitan Planning Organization and
Lake County Board of County Commissioners.
Its employees, agents and personnel, make no warranty as to the accuracy
and/or precision of any information, data, or other content, including
property boundaries, or its use in connection with any other data or system.
The Lake-Sumter Metropolitan Planning Organization and
Lake County Board of County Commissioners, its employees, agents and
personnel shall not be liable for any damages, including consequential
damages, arising from the use of this map product. Independent verification of all
information on this map product should be obtained by the user of this map.

MAP COMPOSITION:
MAY, 2009

\\Lakesumter\mop\gis\ARRA_EaglesNest_Resurfacing_Stimulus\FundedSegment_11x17.mxd - 9/17/2009 @ 11:22:00 AM