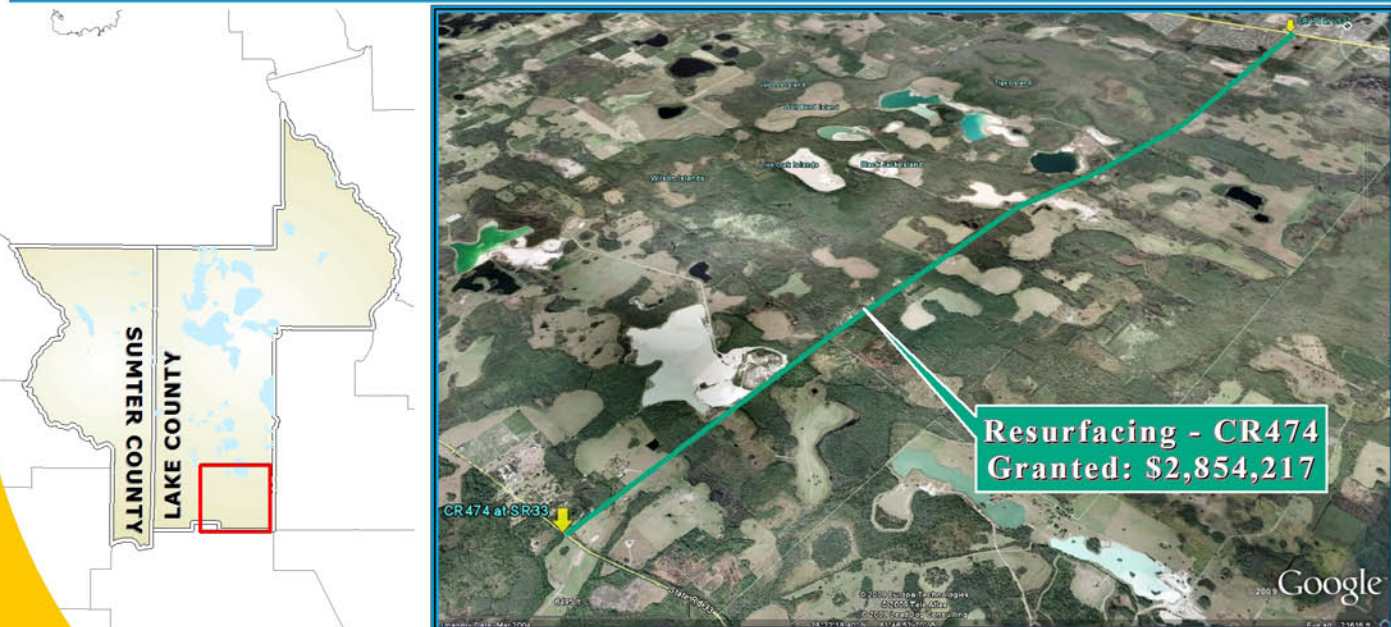
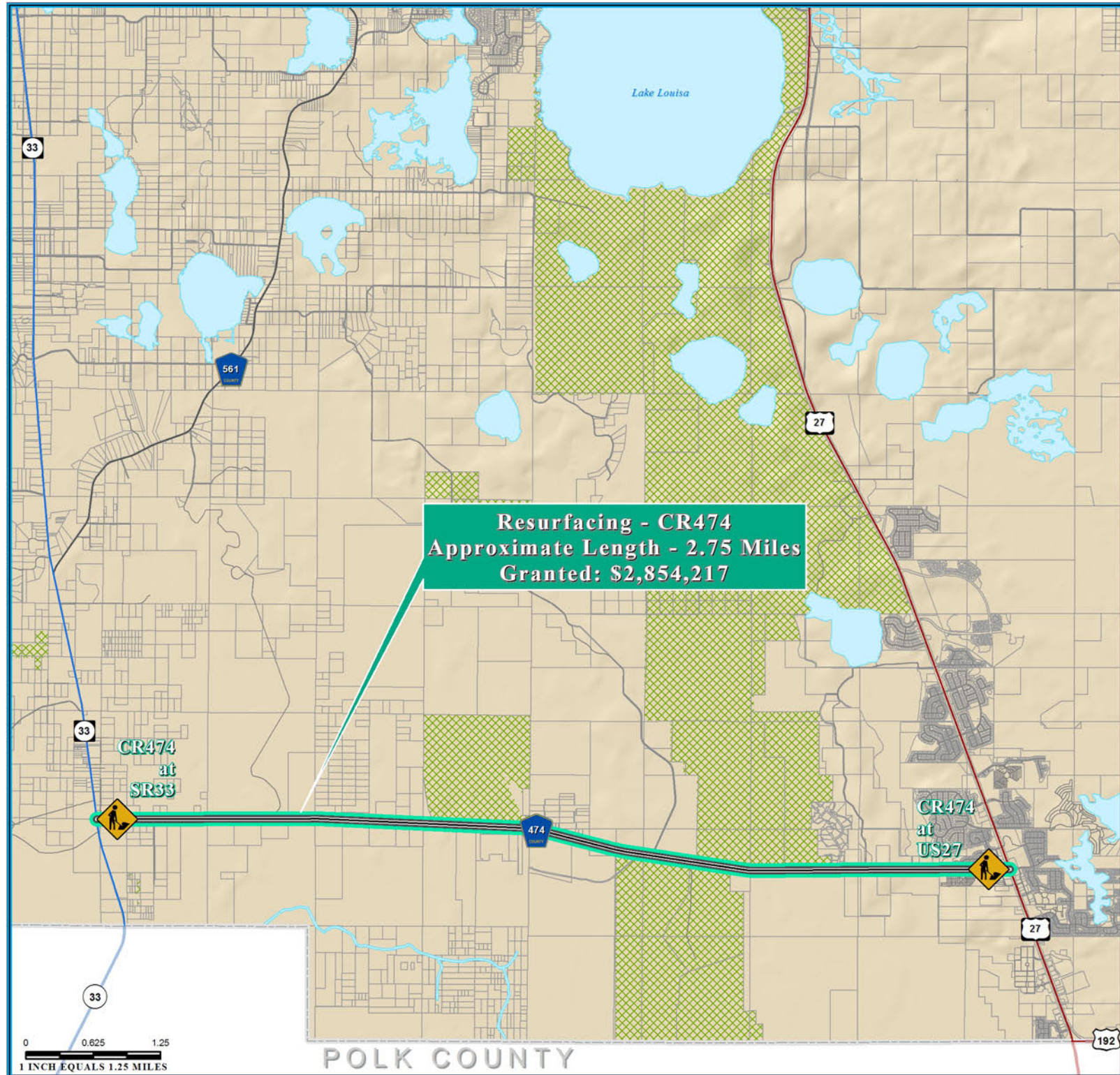


RESURFACING - CR474 ECONOMIC STIMULUS PROJECT



NOTE:
Florida Department of Transportation (FDOT), recommended Economic Stimulus Project for Lake County and Sumter County as announced by Florida Governor May 4, 2009. Additional information about Florida's implementation of the transportation provisions of the American Recovery and Reinvestment Act of 2009 (ARRA) please visit; <http://www.dot.state.fl.us/planning/economicstimulus/>



TRANSPORTATION PLANNING AREA SUMTER AND LAKE COUNTY, FLORIDA



- County Road
- State Road
- US Highway
- Interstate
- Turnpike
- Active Railroad
- Water Body
- Public Lands Managed by Federal Agency
- Public Lands Managed by State Agency
- Public Lands Managed by Local Agency

DATA SOURCES:
Lake and Sumter County GIS Department, Planning
Data Compilation and Map production copyright of the
Lake-Sumter Metropolitan Planning Organization
This map product was prepared from a GIS database of the
System established by the Lake-Sumter Metropolitan Planning Organization and
Lake County Board of County Commissioners. The accuracy of the data is not
guaranteed, and the user assumes all responsibility for any use of the data.
The Lake-Sumter Metropolitan Planning Organization and
Lake County Board of County Commissioners, its employees, agents and
contractors, shall not be liable for any damages, including consequential
damages, arising out of the use of the data.
© 2009 Lake-Sumter Metropolitan Planning Organization
ALL RIGHTS RESERVED. A MAP PRODUCT. Independent verification of all data
is required for any use of the data.

MAP COMPOSITION:
MAY, 2009

\\lakesumter\mopo\gis\ARRA - CR474 - SR33toUS27 - StimulusFundedSegment - 11x17.mxd - 9/17/2009 @ 11:16:52 AM