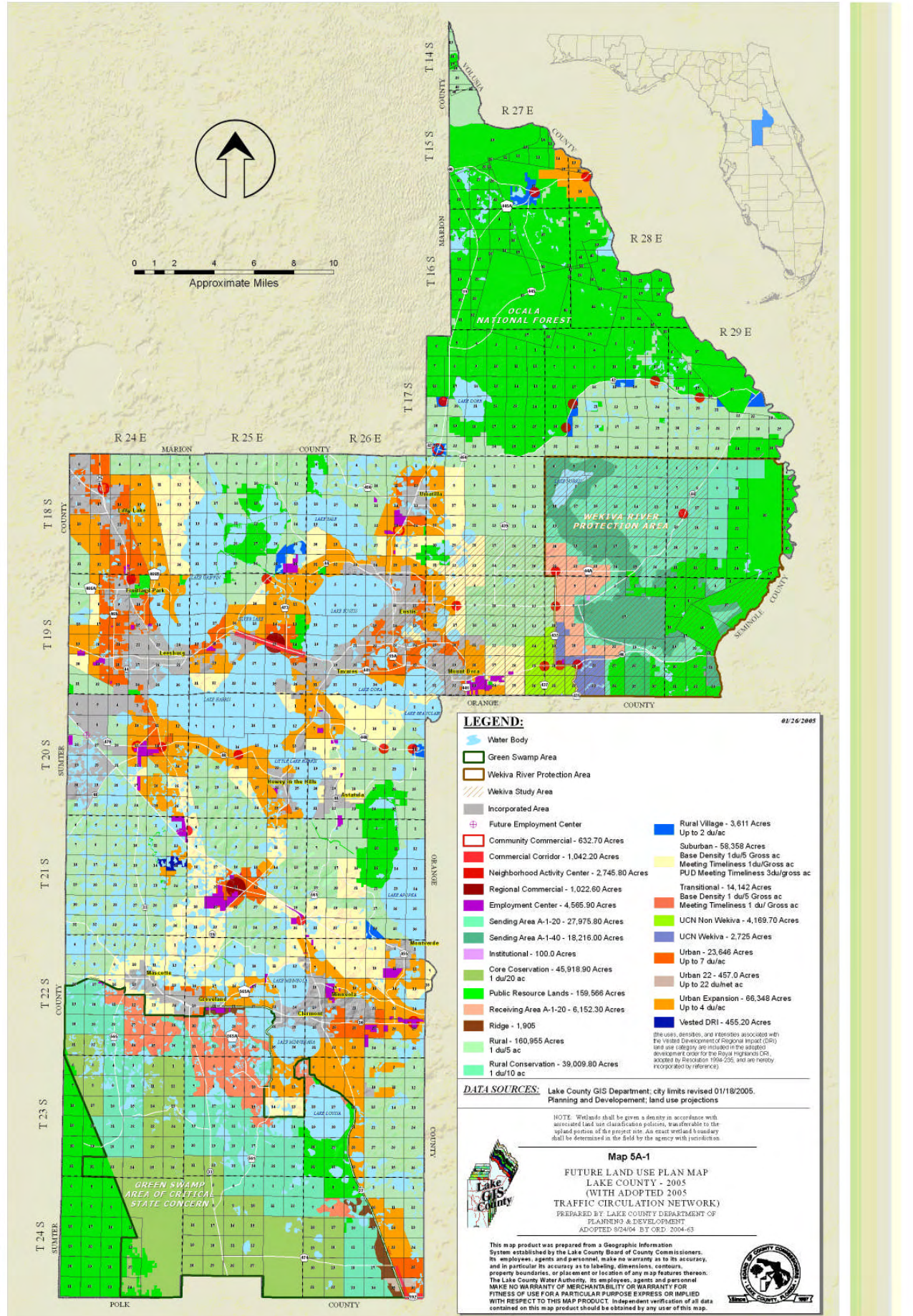




## Chapter 5 Appendix

Appendix 5A: Future Land Use Map ..... 5A-1

# FUTURE LAND USE MAP LAKE COUNTY, FLORIDA



0 1 2 4 6 8 10  
Approximate Miles

**LEGEND:**

- Water Body
- Green Swamp Area
- Wekiva River Protection Area
- Wekiva Study Area
- Incorporated Area
- Future Employment Center
- Community Commercial - 632.70 Acres
- Commercial Corridor - 1,042.20 Acres
- Neighborhood Activity Center - 2,745.80 Acres
- Regional Commercial - 1,022.80 Acres
- Employment Center - 4,665.90 Acres
- Sending Area A-1-20 - 27,975.80 Acres
- Sending Area A-1-40 - 18,216.00 Acres
- Institutional - 100.0 Acres
- Core Coservation - 45,918.90 Acres
- Public Resource Lands - 159,566 Acres
- Receiving Area A-1-20 - 6,152.30 Acres
- Ridge - 1,905
- Rural - 160,955 Acres
- 1 du/5 ac
- 1 du/10 ac
- Rural Village - 3,611 Acres
- Up to 2 du/ac
- Suburban - 58,359 Acres
- Base Density 1du/5 Gross ac
- Meeting Timeliness 1du/Gross ac
- PUD Meeting Timeliness 3du/gross ac
- Transitional - 14,142 Acres
- Base Density 1 du/5 Gross ac
- Meeting Timeliness 1 du/ Gross ac
- UCN Non Wekiva - 4,169.70 Acres
- UCN Wekiva - 2,725 Acres
- Urban - 23,646 Acres
- Up to 7 du/ac
- Urban 22 - 457.0 Acres
- Up to 22 du/net ac
- Urban Expansion - 66,348 Acres
- Up to 4 du/ac
- Vested DRI - 455.20 Acres

01/26/2005

**DATA SOURCES:** Lake County GIS Department; city limits revised 01/18/2005. Planning and Development; land use projections

NOTE: Wetlands shall be given a density in accordance with associated land use classifications policies, as applicable to its accuracy, and in particular its accuracy as to labeling, dimensions, contours, property boundaries, or placement or location of any map features thereon. The Lake County Water Authority, its employees, agents and personnel MAKE NO WARRANTY OF MERCHANTABILITY OR WARRANTY FOR FITNESS OF USE FOR A PARTICULAR PURPOSE EXPRESS OR IMPLIED WITH RESPECT TO THIS MAP PRODUCT. Independent verification of all data contained on this map product should be obtained by any user of this map.



**Map 5A-1**  
FUTURE LAND USE PLAN MAP  
LAKE COUNTY - 2005  
(WITH ADOPTED 2005  
TRAFFIC CIRCULATION NETWORK)  
PREPARED BY LAKE COUNTY DEPARTMENT OF  
PLANNING & DEVELOPMENT  
ADOPTED 9/24/04 BY ORD. 2004-63



© 2005 Lake County GIS Department. All rights reserved.