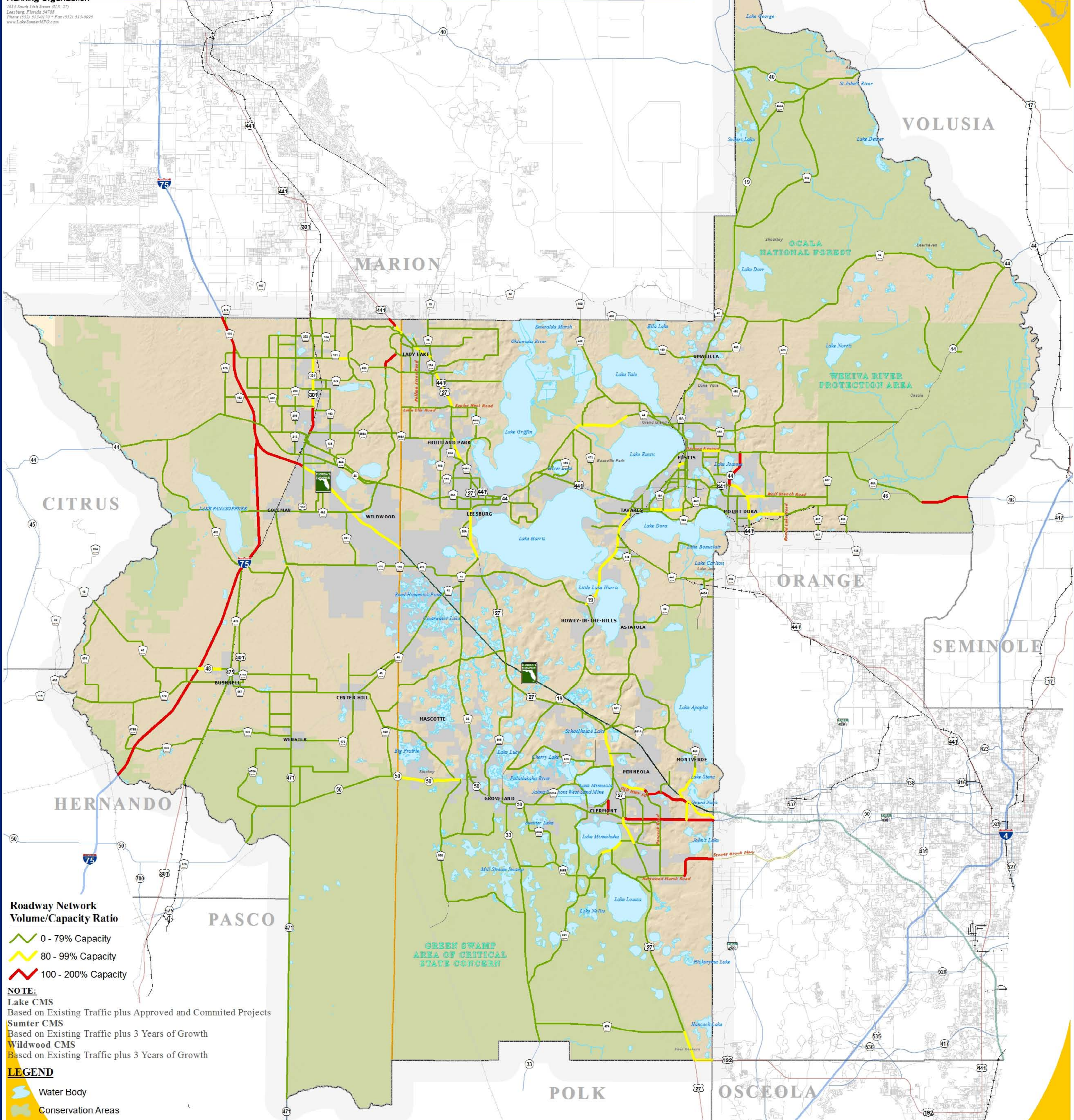


TRANSPORTATION CONCURRENCY ANNUAL REPORT - JANUARY 2009



**Roadway Network
Volume/Capacity Ratio**

- 0 - 79% Capacity
- 80 - 99% Capacity
- 100 - 200% Capacity

NOTE:
Lake CMS
Based on Existing Traffic plus Approved and Committed Projects
Sumter CMS
Based on Existing Traffic plus 3 Years of Growth
Wildwood CMS
Based on Existing Traffic plus 3 Years of Growth

LEGEND

- Water Body
- Conservation Areas
- Major Road
- Interstate
- Turnpike
- Active Railroad
- Abandoned Railroad



TRANSPORTATION CONCURRENCY MANAGEMENT SUMTER AND LAKE COUNTY, FLORIDA



DATASOURCE:
 Lake and Sumter County GIS Department, Parameters
 Data Compilation and Map production compliments of the
 Lake-Sumter Metropolitan Planning Organization.
 This map product was prepared from a Geographic Information
 System established by the Lake-Sumter Metropolitan Planning Organization and
 Lake County Board of County Commissioners.
 Its employees, agents and providers, make no warranty as to its accuracy,
 and in particular its accuracy as to showing, delineating, conveying,
 property boundaries, easements or locations of any map features thereon.
 The Lake-Sumter Metropolitan Planning Organization and
 Lake County Board of County Commissioners, its employees, agents and
 providers MAKE NO WARRANTY OF MERCHANTABILITY OR WARRANTY FOR
 FITNESS OF THE FOR A SPECIFIC PURPOSES OR DISPLAYED
 WITH RESPECT TO THIS MAP PRODUCT. Independent verification of all data
 contained on this map product should be obtained by any user of this map.

MAP COMPOSITION:
JANUARY 2009